

KitchBox Dimensions: 18" deep x 16.50" high x 3.50" wide
Fits into 18" and larger base cabinets houses 13' of retractable hose.

Installation Overview: (detailed instructions below)

1. Determine the position of the Kitchbox in the cabinet
 - a. Determine floor bracket position
 - b. Determine top bracket position
2. Secure all brackets and connects to central vacuum tubing

INSTALLATION DETAIL

1. Locate the unit centrally so that the areas to be cleaned can be conveniently reached.
2. **There are two types of installations:**
 - a. **Through the wall Installation** (it's the best if the stub out is not directly behind the Kitchbox)
 - b. **Through the Floor installation**



a



b

NOTE: Before you install the Kitchbox, you will need to find the Central vacuum trunk line and plan a route from the trunk line to the cabinet location. Check your planned tube route for existing obstructions such as plumbing, HVAC and electrical lines.

1. Locate the trunk line closest to the selected Kitchbox location.
2. Determine the location in the trunk line to insert a 45° Y or 90° TY.
3. Cut and deburr the trunk line.
4. Insert the Y or TY.
5. Complete with the appropriate tubing and fittings to position the tube line under the desired cabinet.

INCLUDED: Kitchbox-with retractable hose and the metal brackets as the pictures.



Positioning the unit...

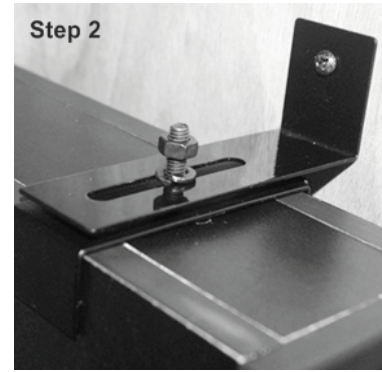


From the side, the unit should be positioned as far forward as possible while still allowing the cabinet door to close without hitting the hose handle.



Secure the unit to the cabinet side wall.

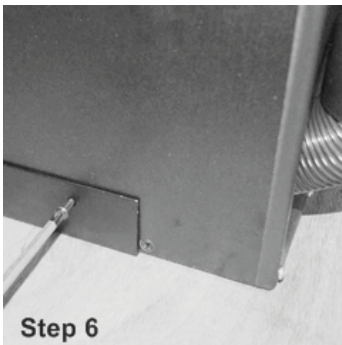
OR



Secure the unit to door frame.

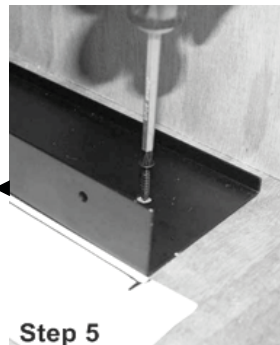
OR

Determine Position: position the top bracket (consists of the bracket and sliding arm). There are two options to secure the top of the unit. Pre-drill a pilot hole in the side wall before driving screw to prevent splitting the wood. Don't insert screws at this time. The Kitchbox will need to be removed. And pls use the screw with No.2 (see the picture of the screws on the end of first page).



Step 6

Place the Kitchbox back into the bracket and properly position. Then use two black wood screws with NO.2 to secure the Kitchbox to the base bracket.

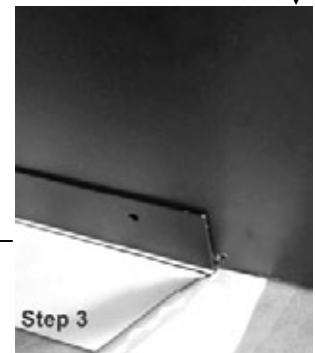


Step 5

Remove the unit. Align the bracket to the reference marks and pre-drill the 2 holes. Install the 2 screws through the bracket into the floor of the cabinet. Use the screw with NO.1 (see the pictures of the screws).



Step 4



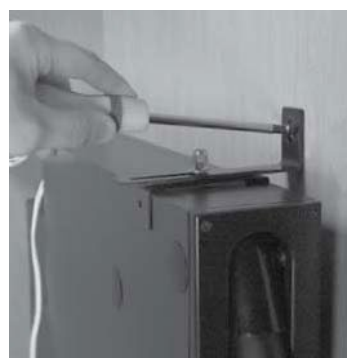
Step 3

Check to make sure that there is clearance for the door and proper hose operation. (A piece of paper to mark on works well when you make reference marks) Position the unit and make reference marks for the bracket.



Step 7

OR



To completely secure the Kitchbox there are two options:

To secure to the door frame, use a black wood screw with No.2 to secure the sliding arm.

OR

To secure to the side wall use a screwdriver and wood screw with No.2. **CAUTION:** Do not over-tighten the screw.

Connecting to the Vacuum Line

"Through the wall" installations

Attention: Don't glue the vacuum line to the fitting provided on the unit: it's a friction fit for easy removal.



With the unit in place trim out the stub (from your trunk line) by using tubing to tie into the Kitchbox.



Dry fit your assembly with the escutcheon plate and wire in place (the escutcheon plate is notched for the wire to run through it along side the tubing). Glue and assemble your fittings /tubing and attach to the trunk line. Do not glue the vacuum line to the black fitting on the unit. Attach the low voltage wires from the Kitchbox to the low voltage wires coming from the trunk line using wire nuts.



Push any excess wire through the escutcheon plate.



To test the unit, simply lift the handle out of the docking station until you feel the switch engage (90 degrees). This will turn on the central vacuum unit and activate the Kitchbox.

"Through the floor" installations

Drill a pilot hole with 1/8" bit and check from lower level to make sure you will be clearing those obstacles.

Make sure you have access to the trunk line.

Attention: Don't glue the vacuum line to the fitting provided on the unit: it's a friction fit for easy removal.



Locate the path for your vacuum line from the trunk line and make reference marks for drilling. Drill a pilot hole to ensure a clear path below the cabinet. Check underneath to ensure there are no obstructions before drilling.



Using a hole saw bore a 2-1/4" hole through the cabinet and the floor.



Dry fit your combination of fittings/ tubing to ensure good positioning. Remove your dry fit assembly, glue assembly and attach to the trunk line. Do not glue the vacuum line to the black fitting on the unit. Be sure to slide the escutcheon onto the tubing before gluing. Attach the low voltage wires from the Collector to the low voltage wires coming from the trunk line using wire nuts.



To test the unit, simply lift the handle out of the docking station until you feel the switch engage (90 degrees). This will turn on the central vacuum unit and activate the Kitchbox.

Using Guide...



Step 2

Turn it on

Just lift the handle until the Kitchbox clicks on. Then pull out the handle.



Step 2

Vacuum with the Handle

You can vacuum without an attachment with the rounded handle.

OR



Optional Accessory Usage:

If you had some tools or wands, try to slip them onto the end of hose handle.



Step 3

Retract the Hose

Cover the handle end with your hand. The Kitchbox hose retracts automatically.



Step 4

Store the handle

Place the Handle inside the knob and lower it into the storage position as shown. Kitchbox turns off automatically.



www.sklep.odkurzaczexxl.pl

sklep@odkurzaczexxl.pl

Tel: +48 506 629 337

+48 888 327 888

